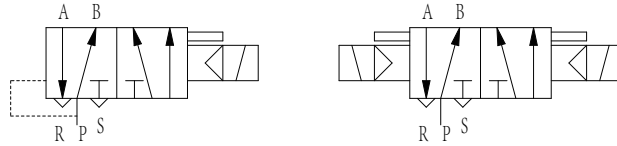


# 263系列二位五通电磁阀

## series 5/2-way solenoid valves



图形符号 symbols



### 产品特点 Features

本列电控换向阀为内部先导式，采用隔套结构。具有换向性好，使用寿命长等特点。电控先导阀上设有手动换向装置，便于系统和设备的调试及维修。电控换向阀有单电控和双电控二种形式，双电控具有记忆功能，广泛应用于驱动气缸或气动系统中做控制元作用。

This series of electronic control valve for the internal pilot, with spacer structure. With a good commutation, long life and other characteristics. It has no manual reversing device on the solenoid pilot valve to facilitate the commissioning and maintenance of the system and equipment. Electronic control valve with a single solenoid pilot control and double solenoid pilot control in two forms, double solenoid pilot control valve has with a memory function, widely used in drive cylinders or pneumatic systems for control components used.

### 型号注释 Order Code

263

6000

系列代码 二位五通滑柱式电磁阀  
Series Code 5/2 -ways spool solenoid valves

通径 6000-6200: Dia 6mm  
7050-7250: Dia 12mm  
6000-7050: 为单电  
6200-7250: 为双电

Orifice

6000-6200 : Size 6mm ;  
7050-7250 : Size 12mm ;  
6000-7050 : Single pilot solenoid control  
6200-7250 : Double pilot solenoid control

### 技术参数 Specification

参数 Item	订货代码 Ordering code		2637050 2637250
	2636000	2636200	
有效截面积mm <sup>2</sup> Effective sectional area(mm <sup>2</sup> )	10		40
工作压力Mpa Working pressure(MPa)	0.15~0.8		
换向时间 S Direction diverting time S	≤0.04		
环境温度 °C Ambient temperature(°C)	-10~55		
介质温度 °C Tempt ambient(°C)	-5~50		
电源电压 V Voltage(V)	AC:220,110,36 DC:24, 12 电压波动允许为额定值的+10%~-15%/ 12 Voltage fluctuation is allowed rated value from + 10% to -15%		
寿命 万次 Working life(10K times)	≥200		